

PEOPLE

These cards are photographs of artworks created by people from different cultures and time periods.

- Look up! See the silhouettes, or shapes, that circle the Learning Center. Match each card to its silhouette.
- Read and discuss the information on the back of the cards.

TIMELINE

FIND THIS



THINK ABOUT THIS

1505

Italy

Leonardo da Vinci

Mona Lisa

Oil painting on panel

30 x 21 inches

The Louvre, Paris

Match this artwork to its silhouette in the Learning Center.

The *Mona Lisa*, with her mysterious smile, may be the world's most famous painting.

What do you think she is smiling about?

FIND THIS



THINK ABOUT THIS

1659

Holland

Rembrandt

Self-Portrait

Oil on canvas

33 x 26 inches

National Gallery of Art, Washington D.C.

Match this artwork to its silhouette in the Learning Center.

Rembrandt painted more than ninety portraits of himself from the beginning of his career in the late 1620's to the last portrait before his death in 1669.

What do you think about his personality by looking at the expression on his face?

FIND THIS



THINK ABOUT THIS

1797 – 1800

Elisabeth Vigée-Lebrun

Countess Golovine

Oil on canvas

33 x 26 inches

University of Birmingham, England

France

Match this artwork to its silhouette in the Learning Center.

Despite not being able to study at art school because she was a woman, Vigée-Lebrun became court painter to the Queen of France, Marie Antoinette.

How many women artists can you name?

FIND THIS



THINK ABOUT THIS

1912 – 1913

Russia

Marc Chagall

The Fiddler

Oil on canvas

74 x 62 inches

Stedelijk Museum, Amsterdam

Match this artwork to its silhouette in the Learning Center.

Chagall's paintings are dream-like. Images seem to float on the canvas and often the figures look too big or too small – like they leapt from the artist's imagination right into the canvas.

How would you draw your dream?

FIND THIS



THINK ABOUT THIS

1931

Mexico

Frida Kahlo

Frida and Diego Rivera

Oil on canvas

39 x 31 inches

San Francisco Museum of Modern Art, San Francisco

Match this artwork to its silhouette in the Learning Center.

Frida Kahlo painted mostly self-portraits that expressed her emotions, fantasies and ideas about the world. She was married to another important Mexican artist, Diego Rivera.

What would you wear in a self-portrait to tell about yourself? Would you include another person?

FIND THIS



THINK ABOUT THIS

c. 8000 – 13000 BC
Hand Stenciling on Rock

Australia

Match this artwork to its silhouette in the Learning Center.

Hand stencils were made by blowing pigment around an outstretched hand, perhaps using a tube.

Can you imagine why a person about twelve thousand years ago left this hand print? Try tracing around your own hand.

FIND THIS



THINK ABOUT THIS

4500 – 4000 BC

Eastern Europe

Figurine

Terra-cotta

approx. 6 inches high

British Museum, London

Match this artwork to its silhouette in the Learning Center.

Early farming communities used clay to make containers to hold water and food. Once shaped, clay needs to be baked or fired at high temperatures to make it hard and strong.

Why do you think people in these communities also made clay figures?

FIND THIS



THINK ABOUT THIS

1300 BC
Painted Coffin Shroud
Paint on linen
12 x 8 inches

Egypt

Match this artwork to its silhouette in the Learning Center.

This mummy wrap was painted to accompany an Egyptian man to the afterlife. The ointment cone on his head was worn to banquets as perfume. The ancient Egyptians wanted to take all their possessions with them to the next world.

The way he is sitting is typical of the way Egyptian artists drew the seated figure. Can you sit in this position?

FIND THIS



THINK ABOUT THIS

1 – 3 Century
Ornamental Figure
Gold, green stone
approx. 3 inches high

Peru

Match this artwork to its silhouette in the Learning Center.

This gold figure was found in an area of Peru known for its innovative metalworking artisans.

What do you think he is holding in his hands?

FIND THIS



THINK ABOUT THIS

7 – 8 Century

Smiling Figure

Ceramic

19 inches high

Metropolitan Museum of Art, New York

Mexico

Match this artwork to its silhouette in the Learning Center.

Large numbers of these smiling figures have been found in Veracruz, Mexico. No one knows their exact use or why they are smiling.

Can you guess why?

FIND THIS



THINK ABOUT THIS

c. 1663

Holland

Jan Vermeer

Young Woman with a Water Jug

Oil on canvas

18 x 16 inches

Metropolitan Museum of Art, New York

Match this artwork to its silhouette in the Learning Center.

Vermeer painted everyday scenes with every detail included. He captured a moment in time almost the way a camera does.

What do you think the woman is looking at through the open window?

FIND THIS



THINK ABOUT THIS

1700 – 1800

Japan

Torii Kiyonaga

Evening on the Banks of the Sumida River

15 x 10 inches

Woodcut, center of triptych (three parts)

Match this artwork to its silhouette in the Learning Center.

Japanese artists developed the art of printing from wood blocks. Each color required a separate block.

How many different colors are in this woodcut? How many patterns and textures can you find?

FIND THIS



THINK ABOUT THIS

c. 1800

United States

Hopi, Native American

Kachina Doll

Wood and paint

approx. 15 inches high

Match this artwork to its silhouette in the Learning Center.

The kachina doll is used to teach Pueblo children about their history and culture.

How would you dress a doll to tell about your family history?

FIND THIS



THINK ABOUT THIS

1880

France

Auguste Rodin

The Thinker

Bronze

27 inches high enlarged in 1904 to 79 inches high

Multiples: Rodin Museum, Paris, Metropolitan Museum, New York and other locations

Match this artwork to its silhouette in the Learning Center.

The facial expressions and poses of Rodin's statues express strong feelings.

Can you take the same pose and guess what he is thinking about?

FIND THIS



THINK ABOUT THIS

1884 – 1886

France

Georges Seurat

A Sunday Afternoon on the Island of La Grande Jatte

Oil on canvas

81 x 120 inches

The Art Institute of Chicago, Illinois

Match this artwork to its silhouette in the Learning Center.

Seurat felt color had fixed laws that could be “taught like music.” The spots of color combine to make new colors as you look at them. His style is called “pointillism.”

Can you see the tiny dots that form the shapes?

FIND THIS



THINK ABOUT THIS

1893

Norway

Edvard Munch

The Scream

Oil on canvas

36 x 29 inches

The Munch Museum, Oslo

Match this artwork to its silhouette in the Learning Center.

Munch's use of color and shape exaggerate the emotion he wants to express so you understand exactly what he is feeling.

Can you almost hear the scream? There is another scream in the Timeline. Can you find it?

FIND THIS



THINK ABOUT THIS

1936 – 1937

Russia

Sonia Terk Delaunay

Study for Portugal

Gouache, right panel of 4 parts

14 inches high

National Museum of Women in the Arts, Washington D.C.

Match this artwork to its silhouette in the Learning Center.

Delaunay used vibrant colors in combinations. This color-as-form theory is known as Orphism.

Can you put different colors together to make a form?

FIND THIS



THINK ABOUT THIS

1937

Spain

Pablo Picasso

Guernica

Mural

132 x 300 inches

The Prado, Spain

Match this artwork to its silhouette in the Learning Center.

In *Guernica* Picasso portrayed the suffering of war. Find *The Scream* by Munch in the Timeline.

Which expression is more powerful for you?

FIND THIS



THINK ABOUT THIS

1939

United States

Augusta Savage

Lift Every Voice and Sing

Cast iron replica of original 16 foot high plaster sculpture

11 x 9 x 3 inches

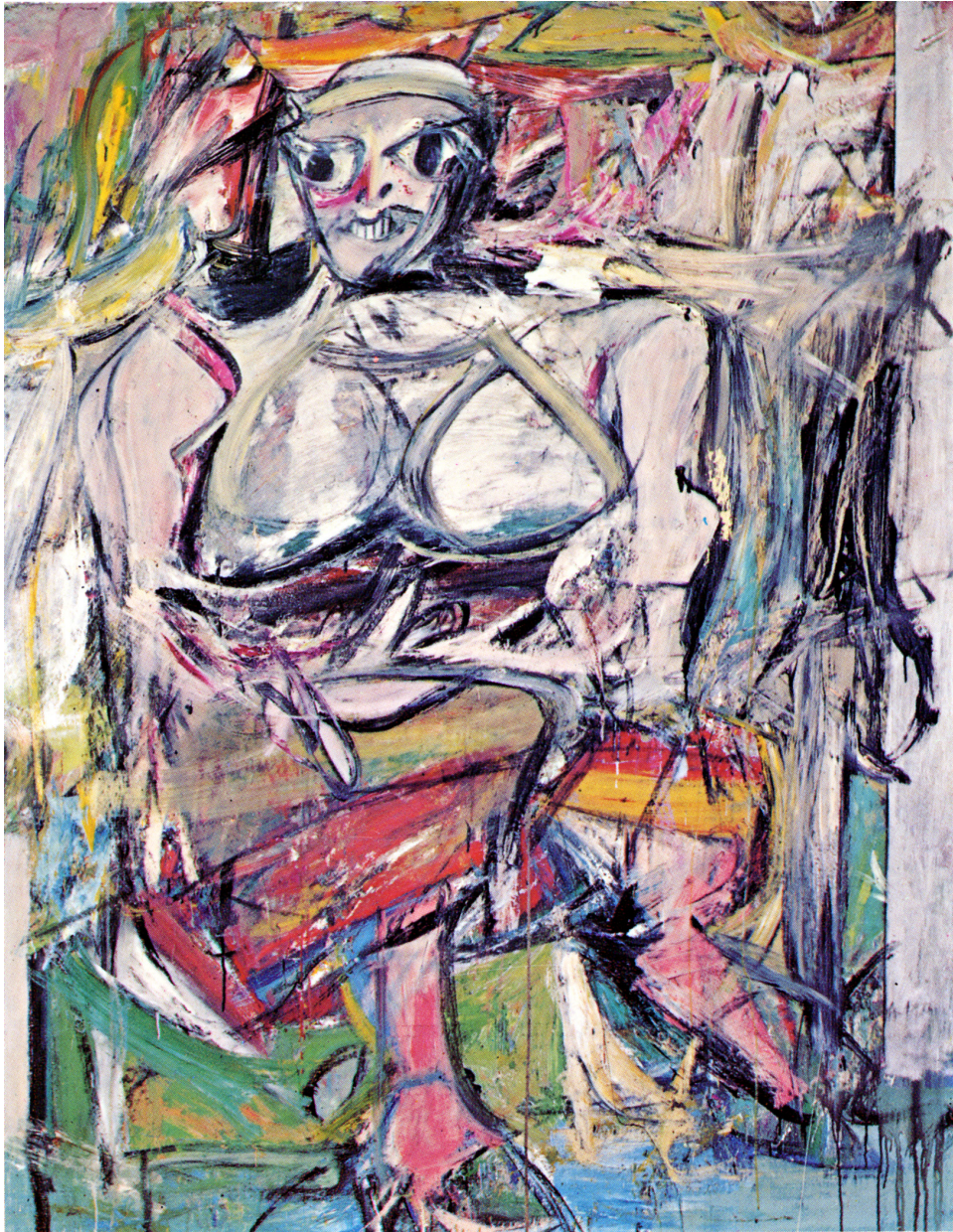
Hampton University Museum, Virginia

Match this artwork to its silhouette in the Learning Center.

Savage made this sculpture for the 1939 World's Fair to celebrate the musical achievements of African Americans. The strings of the harp are choir singers and the shape of the harp is a hand.

Can you imagine what her sculpture looked like 16 feet high which is about two floors of a building?

FIND THIS



THINK ABOUT THIS

1950 – 1952

Holland

Willem de Kooning

Woman I

Oil on canvas

76 x 58 inches

Museum of Modern Art, New York

Match this artwork to its silhouette in the Learning Center.

Can you see the figure of the woman in the midst of all the brush strokes?

How do you think the artist began the painting? Did he start with a pencil drawing?

FIND THIS



THINK ABOUT THIS

1964

United States

Roy Lichtenstein

Oh, Jeff...I Love You, Too...But...

Oil and magna on canvas

48 x 48 inches

Private collection

Match this artwork to its silhouette in the Learning Center.

This artist's young son dared him to make a painting of a cartoon character. The resulting picture (of Mickey Mouse) changed the course of his art.

Can you see the dots he uses to form the image?

FIND THIS



THINK ABOUT THIS

1965

France

Nikki de Saint Phalle

Nana

Mixed media

50 x 36 x 31 inches

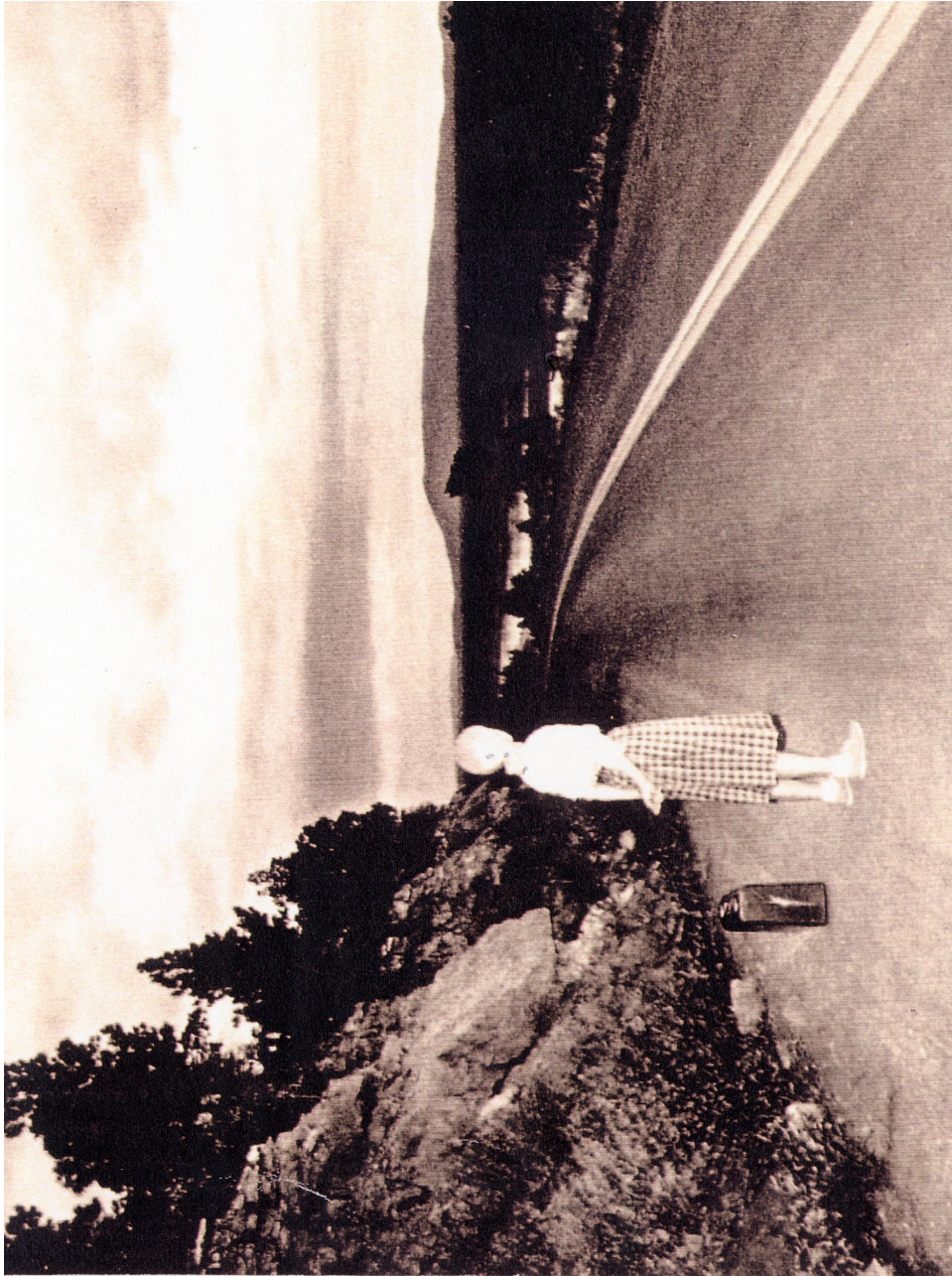
Albright-Knox Gallery, Buffalo

Match this artwork to its silhouette in the Learning Center.

This artist's sculptures are playful but also strong.

How would you feel if you saw this larger than four foot high figure running towards you?

FIND THIS



THINK ABOUT THIS

1979

United States

Cindy Sherman

Untitled Film Still #48

Black and white photograph

8 x 10 inches

Institute of Contemporary Art, Boston

Match this artwork to its silhouette in the Learning Center.

As a child Sherman loved to play dress-up. Now she wears costumes to change her identity and takes photographs of herself, which tell stories about the people she pretends to be.

What story can you tell about this woman with her suitcase?